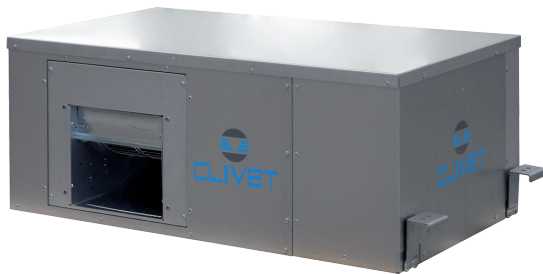


**Direct expansion high efficiency air conditioner**  
 Reversible heat pump  
 Water cooled  
 Horizontal indoor installation uncased  
**Capacity from 2,3 to 4,2 kW**

## VERSATEMP



**VERSATEMP EVH-X** is the **high efficiency packaged air-conditioner** that automatically heats or cools rooms throughout the whole year, using **water as source**.

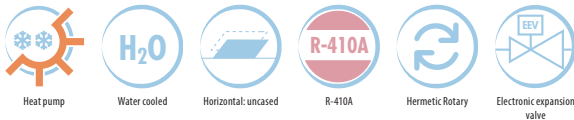
Thanks to its rotating compressor, its electronic expansion valve, its plate exchanger and its multi-speed centrifugal fan, this unit stands out due to its **high level of efficiency in all operating conditions** and its **great reliability**.

The operating silence is ensured by the particular sound-proofing of the compressor compartment, by the accurate balancing of the fans and by the standard anti-vibration devices for all moving parts.

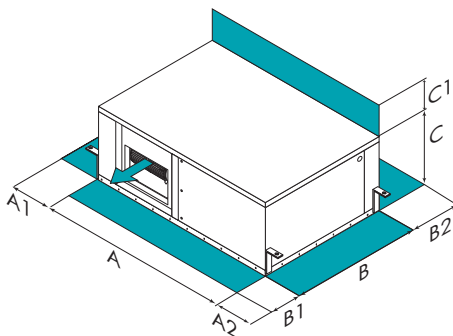


WLHP

### functions and features



### dimensions and clearances



Size – EVH-X		5	7	9	11	15	17
A - Length	mm	1034	1034	1034	1034	1034	1034
B - Width	mm	513	513	513	513	513	513
C - Height	mm	361	361	361	386	386	386
A1	mm	100	100	100	100	100	100
A2	mm	350	350	350	350	350	350
B1	mm	350	350	350	350	350	350
B2	mm	350	350	350	350	350	350
C1	mm	100	100	100	100	100	100
Operating weight	kg	71	73	74	77	81	82

The above mentioned data are referred to standard units for the constructive configurations indicated. For all the other configurations, refer to the relative Technical Bulletin.

CAUTION! For trouble-free operation of the unit it is essential to maintain the safety distances indicated by the green areas.

## technical data

Size – EVH-X			5	7	9	11	15	17
<b>A27/19 W30</b>								
▶ Cooling capacity	(1)	kW	2,26	2,83	3,16	3,45	3,87	4,16
Sensible cooling capacity		kW	1,91	2,41	2,75	2,93	3,22	3,50
Total power input		kW	0,54	0,66	0,74	0,77	0,85	0,92
EER (EN 14511:2013)		-	4,22	4,27	4,28	4,50	4,54	4,51
<b>A20 W20</b>								
▶ Heating capacity	(2)	kW	2,76	3,38	3,85	4,15	4,50	4,92
Total power input		kW	0,55	0,65	0,77	0,82	0,94	1,06
COP (EN 14511:2013)		-	4,99	5,20	4,97	5,05	4,81	4,66
<b>A20 W15</b>								
▶ Heating capacity	(3)	kW	2,46	2,97	3,33	3,66	3,98	4,42
Total power input		kW	0,55	0,63	0,72	0,80	0,89	1,02
COP (EN 14511:2013)		-	4,42	4,60	4,47	4,59	4,40	4,30
No. of compressors		Nr	1	1	1	1	1	1
Type of compressors	(4)	-				ROT		
Supply airflow		l/s	148	148	170	190	222	222
Type of supply fan	(5)	-				CFG		
Number of supply fans		Nr	1	1	1	1	1	1
Max. static pressure supply fan		Pa	40	40	40	40	40	40
Water flow rate (Source Side)	(6)	l/s	0,13	0,16	0,18	0,20	0,22	0,24
Standard power supply		V				230/1/50		
Sound pressure level	(7)	dB(A)	33	33	34	34	34	35
<b>Directive ErP (Energy Related Products)</b>								
SEER	(8)	-	3,75	4,06	3,90	4,10	4,05	4,18
SCOP	(8)	-	3,41	3,90	3,63	3,77	3,97	4,05

### Notes

The Product is compliant with the Erp (Energy Related Products) European Directive. It includes the Commission delegated Regulation (EU) No 2016/2281, also known as Ecodesign Lot21.

Values read in compliance with EN14511:2013 and including the required system fan motor and water pump capacity for overcoming pressure drops inside the unit.

- (1) Ambient air 27°C D.B./19°C W.B. Exchanger water temperature 30°C / 35°C  
 (2) Ambient air 20°C D.B. Exchanger inlet water temperature 20°C. The water temperature at the exchanger output is read in relation to the flow of water being chilled.  
 (3) Ambient air 20°C D.B. Exchanger inlet water temperature 15°C; The water temperature at the exchanger output is read in relation to the flow of water being chilled.  
 (4) ROT = rotary compressor

- (5) CFG = centrifugal fan  
 (6) Water flow calculated in relation to the performances in cooling  
 (7) Sound levels refer to the unit at full load installed on the ceiling, ducted, with minimum, standard and maximum air flow rate of the fan. Available static pressure 40 Pa. In accordance with the UNI-EN ISO 3744 regulation, the average sound pressure level refers to a distance of 1 m from the outer surface of a ducted unit installed on the ceiling. Measurements are made in accordance to the UNI EN ISO 9614-2, with units installed over two sound reflective surfaces.  
 (8) Data calculated according to the EN 14825:2016 Regulation

## accessories

- ▶ **CWMX** Electronic room control with display, for wall installation
- ▶ **CIWMX** Electronic room control with display, for wall installation in built-in box
- ▶ **V2MODX** 2-way modulating valve for disposable water system
- ▶ **V2ONX** 2-way ON-OFF valve for variable flow-rate loop
- ▶ **TPF** Filter-holder frame with lateral and bottom exhaust
- ▶ **AMMX** Spring antivibration mounts
- ▶ **DAOJX** Air supply duct with flexible connection
- ▶ **DAIX** Return air duct
- ▶ **DAOIX** Air discharge and intake duct
- ▶ **FCVBX** Water balancing valve
- ▶ **VIFWX** Steel mesh strainer and hand shut-off valve
- ▶ **PFHCX** 200 mm flexible pipes for the connection to the water circuit + drop conduit
- ▶ **PFHC1X** 500 mm flexible pipes for the connection to the water circuit + drop conduit
- ▶ **CDPX** Condensate drain pump
- ▶ **MOBA** RS485 serial port with Modbus protocol, built-in
- ▶ **MOBX** Modbus RS485 serial port kit
- ▶ **CMSLWX** LonWorks serial communication module
- ▶ **BACX** BACnet serial communication module
- ▶ **VIMANX** Hand shut-off valve
- ▶ **BPH2OX** Shut-off valve for by-pass (water side)

### Key to symbols:

- Accessories separately supplied